



# EXPEDITIONS



## ANTARCTICA

2025-2027 VOYAGES | [EXPEDITIONS.CO.UK](https://www.expeditions.co.uk)

SPECIAL SAVINGS ON 2025 DEPARTURES



**“For me, early season departures are best. Everything is covered in snow, and the ice is stunning—it’s pristine. Guests can walk on the frozen sea, cross-country ski, snowshoe and much more.”**

**— CAPTAIN MARTIN GRASER**  
*National Geographic Resolution*

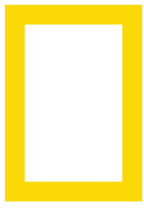


## CONTENTS

Experience Antarctica From a New Perspective	4
The Pioneers of Modern Polar Exploration	6
The Polar Fleet	8
Cook's Nook: A Zero-Waste Dining Experience	12
On Expedition in Antarctica: A Day in the Life	14
Seasons in Antarctica	16
Antarctica With Family	18
Antarctica, Patagonia & the South Atlantic Isles	22
Extensions	29
Special Offers and Inclusive Pricing	30
Reservation Information	31

*Cover: Kayakers paddle the iceberg-dotted waters of a quiet Antarctic bay. ©Kim Nesbitt.*

*Left: Guests take the rare opportunity to walk atop the frozen sea, an experience only possible during early season departures in Antarctica. ©Andrew Peacock.*



# EXPERIENCE ANTARCTICA FROM A NEW PERSPECTIVE

WITH NATIONAL GEOGRAPHIC-LINDBLAD EXPEDITIONS



## TRAVEL WITH A WORLD-CLASS TEAM

Voyages are led by passionate expedition teams—naturalists, photographers and cultural specialists who are explorers at heart. National Geographic Experts join select departures, inspiring new perspectives on your surroundings.



## TAKE GREAT PHOTOS WITH THE PROS

National Geographic photographers have spent decades travelling the globe, capturing the world's most impactful images. They join every Antarctic expedition—along with a National Geographic certified photo instructor—to help travellers hone their camera skills in captivating places.



**Driven by curiosity and a sense of discovery, voyages with National Geographic-Lindblad Expeditions are designed to immerse you in your destination, inspiring you to see more, learn more and do more.**

### EXPLORE YOUR WAY EVERY DAY

Itineraries feature a range of immersive activities that bring you into the pages of *National Geographic Magazine*, from kayaking among icebergs to hiking alongside massive glaciers. Each expedition offers excursions for every skill level so that you can explore your way—and at your own pace—every day.

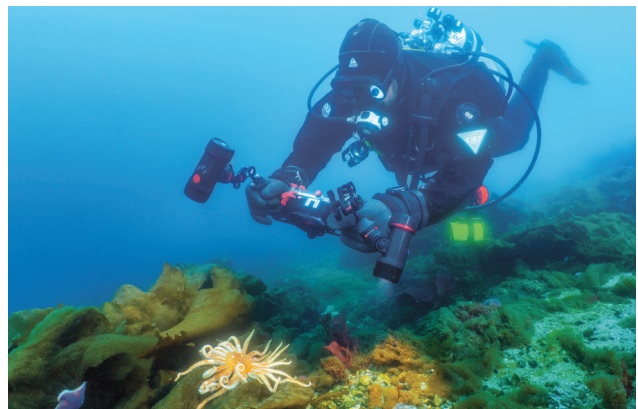


### REVEALING UNDERSEA WONDERS

On most departures, an undersea specialist brings your destination's marine wonders to the surface by capturing underwater footage of Antarctica's surprisingly vibrant marine life. During nightly recaps, the specialist interprets fascinating sea creatures and geological features, offering insights integral to the story of your destination.



**Video:** Watch Undersea Specialist James Hyde gear up for a dive in frigid Antarctic waters, and see the creatures he's spotted beneath the waves.



### EXPEDITIONS THAT GIVE BACK

Every voyage that sets sail contributes to the preservation of the planet through the Lindblad Expeditions-National Geographic Fund. Your support helps conserve coastal communities and marine habitats—and it funds explorers from the National Geographic Society who are envisioning bold changes for a sustainable future.



### All In

Activities and excursions are always included in the voyage price unless otherwise noted. For a complete list of inclusions, visit [expeditions.co.uk/plan/whats-included](https://expeditions.co.uk/plan/whats-included)

## A LEGACY OF SAFETY AND INNOVATION

# TRAVEL WITH THE PIONEERS OF MODERN POLAR EXPLORATION

In 1966, Lars-Eric Lindblad led the first tourist expedition to Antarctica, ushering in a new era of exploration on the white continent. After chartering vessels for his earliest expeditions, Lindblad built a ship to suit the unique needs of the journey. The *M.S. Lindblad Explorer* featured a reinforced hull that allowed her to penetrate the ice—and to travel deeper into the continent than any other passenger vessel.

The ship launched a rich tradition of innovation in polar discovery that has endured for more than 55 years and set the stage for National Geographic-Lindblad Expeditions to provide the safest and most immersive experience available in Antarctica today.

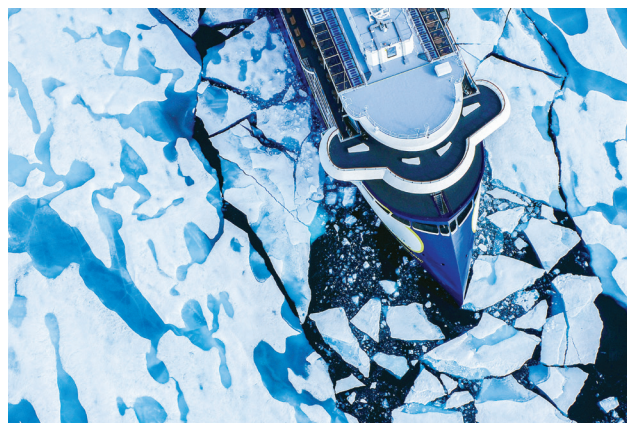


### Choosing Your Antarctic Voyage

Read this Antarctica how-to guide to learn the six most important questions to ask when booking your voyage to the white continent.

## INNOVATING ANTARCTIC NAVIGATION

In the 55+ years since pioneering Antarctic travel, Lindblad Expeditions has amassed an unrivaled depth of polar expertise. The fleet's survey archive dates to the *Lindblad Explorer* and holds extensive data on safe anchorages along Antarctica's wild shores. To this day, each crew records its routes using satellite positioning and water-depth measurements, mapping out "safe tracks" that take travellers to remote landings no other operator can visit.



## VITAL SAFETY FEATURES

The high ice-class ships in the polar fleet are outfitted with safety technologies that far exceed industry requirements for Antarctic travel. In addition to being equipped with the required Global Maritime & Distress Safety System, the ships are outfitted with features like ice radar and searchlights; drones for ice navigation; and an International Association of Antarctica Tour Operators (IAATO) Emergency Response System, developed by Lindblad's own Senior Captain Leif Skog to ensure that all IAATO ships keep in touch daily.

## EXPEDITIONS GUIDED BY NATURE

Experienced crews take advantage of varying ice and weather conditions to make landings based on hour-by-hour evaluations. Lindblad Expeditions owns and operates its own ships, with captains and crews that are full-time members of each vessel's veteran expedition team, rather than temporary contractors. This creates a uniquely collaborative culture that allows for flexibility and encourages wide-ranging itineraries. Travellers enjoy adventure-filled days and amazing wildlife sightings—experiences befit for the trip of a lifetime.

## THE POLAR FLEET BUILT FOR AWE

The powerful ships in the National Geographic-Lindblad Expeditions polar fleet bring you directly—and safely—into the heart of Antarctica’s icy wilds. Each small, nimble vessel was designed to deliver the finest in polar exploration and is helmed by a veteran “ice master” captain who possesses extensive experience navigating Antarctic waters.

This fusion of advanced technology and unrivaled expertise allows National Geographic-Lindblad Expeditions to stay flexible, go farther and ultimately deliver the most ambitious itineraries available at the bottom of the globe.



# NATIONAL GEOGRAPHIC ENDURANCE AND NATIONAL GEOGRAPHIC RESOLUTION

Informed by more than 55+ years of polar experience, the 138-passenger *National Geographic Endurance* and her sister ship, *National Geographic Resolution*, are in a class of their own. Featuring sleek Scandinavian design and special amenities—including infinity hot tubs, fire pits and twin saunas—these highest ice-class vessels deliver the ultimate expedition experience in supreme comfort.

## Learn More



National  
Geographic  
Endurance



National  
Geographic  
Resolution



Clockwise from top: Suite with balcony; geodesic igloos are available for overnight stays; Two Seven Zero° restaurant.



# NATIONAL GEOGRAPHIC EXPLORER

With a storied history working in Norway's famed Coastal Express, the 148-passenger flagship *National Geographic Explorer* was completely rebuilt to sail the poles. With an ice-strengthened hull, well-appointed shared spaces and newly renovated suites featuring in-room exploration tools, this extraordinary ship is devoted to discovery—every detail revealing a dedication to curiosity and wonder.



[Learn More](#)

*National Geographic Explorer*



*Clockwise from top: Newly renovated Category 7 suite; exquisite meals prepared with fresh ingredients; cabin bathroom.*



# NATIONAL GEOGRAPHIC ORION

The intimate, 102-passenger *National Geographic Orion* invites you to enjoy your time on board in supreme comfort. Gracious gathering spaces—including an observation lounge, a top deck hot tub and a soothing Nordic sauna—foster the camaraderie that is the hallmark of these expeditions, while an expansive open deck offers panoramic views of the icy wilderness at the bottom the globe.



[Learn More](#)

*National Geographic Orion*



Clockwise from top: Category 5 stateroom; dining room; cabin bathroom.



# COOK'S NOOK

## A ZERO-WASTE DINING EXPERIENCE

“The concept dinners at National Geographic-Lindblad Expeditions are about telling a story and connecting people with food,” explains Hotel Director Laura Fuentes. Each of these special dining experiences, offered on select ships across the fleet, takes guests on an exquisite, multi-course culinary journey. Here, Fuentes and Sous Chef Ruslan Yatsyniak describe the Cook’s Nook experience aboard *National Geographic Resolution*.



*Laura Fuentes serves as the hotel director for National Geographic Resolution, overseeing all aspects of guest services on board, including the ship's food and beverage programme.*

The Cook’s Nook table is one of my favourite spots on *National Geographic Resolution*. It’s an intimate setting separate from the main dining room, and it really gives guests a sense of community on board. The Cook’s Nook menu is a chef’s tasting menu—a culinary expedition through seven courses—and the concept is zero waste, which uses different ingredients in multiple applications to maximize everything in the kitchen.

I think it’s important for guests to know where their food comes from, especially when travelling in remote areas. The sustainable food programme at National Geographic-Lindblad Expeditions starts with the shoreside purchasing managers, who source from responsible vendors and fisheries.

Chefs then have the freedom to go into communities on shore so they can explore the culture and see what’s fresh and exciting. They’re incredibly innovative; their menus convey how much they care about the planet by telling the culinary story of the surrounding environment.

— **LAURA FUENTES**  
Hotel Director, *National Geographic Resolution*





*Ruslan Yatsyniak (shown above) is the sous chef aboard National Geographic Resolution. He has decades of experience crafting culinary creations at top-tier restaurants and aboard expedition and river cruise ships.*

The *National Geographic Resolution* chefs spend 300 hours creating the dishes on the zero-waste tasting menu. The menu was designed to teach guests how to minimize food waste and create beautiful dishes using simple ingredients.

A guest favourite is the cauliflower course. Many delicious things can be created from a single piece of cauliflower—there’s cauliflower aioli, mousse, purée, scallop, caviar and even espuma.

Travellers are always curious about the various preparations, and I love talking with them and sharing recipes. I believe that a warm conversation enhances the flavour of every dish—it’s a genuine delight that adds a special touch to the dining experience.

**— RUSLAN YATSYNIAK**

Sous Chef, *National Geographic Resolution*



**Video**

Learn more about the unique zero-waste dining experience aboard *National Geographic Resolution*.



A DAY IN THE LIFE

# ON EXPEDITION IN ANTARCTICA

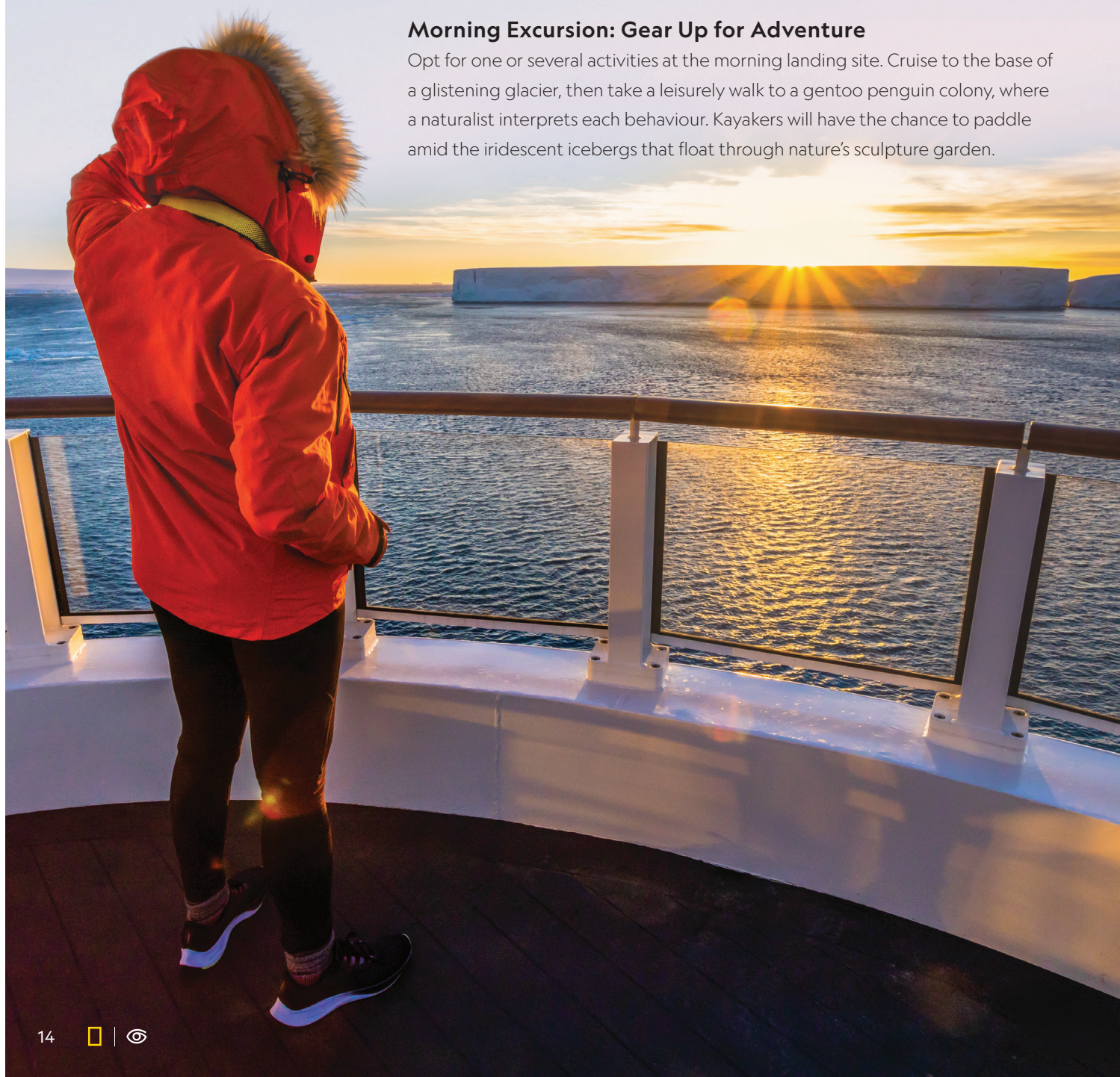
Each day in Antarctica is different, and when you explore on a voyage with National Geographic-Lindblad Expeditions, there is always a variety of enticing adventures on offer—whether you wish to pack your day with active excursions or enjoy more leisurely explorations.

## **Early Risers: Wake Up to Icy Views**

Head to the bow and soak in the icy stillness of the seventh continent before the rest of the ship awakens. You're likely to meet a naturalist who aids in the search for wildlife, including killer whales, humpbacks and wandering albatrosses.

## **Morning Excursion: Gear Up for Adventure**

Opt for one or several activities at the morning landing site. Cruise to the base of a glistening glacier, then take a leisurely walk to a gentoo penguin colony, where a naturalist interprets each behaviour. Kayakers will have the chance to paddle amid the iridescent icebergs that float through nature's sculpture garden.





### Lunch Is Served

Select from a menu of diverse options that can be tailored to your taste and dietary preferences. Many lunches start with a robust soup to ward off the Antarctic chill.



### Talks and Photo Tips

Attend a talk in the lounge by your National Geographic photographer, or take advantage of the ship's amenities: read up on Ernest Shackleton in the library, test out high-tech cameras and lenses from the complimentary photo gear locker or visit the open Bridge to chat with the captain about the unique challenges of polar navigation.

### Afternoon Excursion: Into the Wild

In Antarctica, you'll discover something unexpected daily. In the early season, the captain may disembark travellers on the fast ice so you can walk across the frozen sea. Opt to take the polar plunge, followed by warm blankets and steaming hot chocolate provided by the crew. Young travellers in the National Geographic Global Explorers programme may be invited to participate in a plankton tow.



### Ready for Recap

Meet in the lounge over drinks and hors d'oeuvres, and settle in for the daily recap, featuring presentations and slideshows on the day's adventures and a preview of tomorrow's activities.

### Dinner at the Chef's Table

Every voyage includes special dining events, such as barbecues or guided wine tastings. Those travelling aboard *National Geographic Endurance* or *National Geographic Resolution* are invited to a special private dinner that features a refined seven-course tasting menu.



### Midnight Zodiac Cruise

In November and December, the evening sun often paints glacial hues in brilliant pinks and the skies a fiery orange. On nights like this, your expedition leader may invite guests for a midnight Zodiac cruise to soak up the spectacular scenery.

# WHAT TO EXPECT SEASONS IN ANTARCTICA

No matter when you visit, the grandeur of Antarctica is always on display—but every month is unique in terms of weather and wildlife. This guide reveals what makes each special.



**Video:** Naturalist Rich Kirchner describes each Antarctic travel month in detail.



*Kayakers take a break from paddling to photograph an iceberg.*



*November: Premium conditions for photography.*

## NOVEMBER

**Landscapes & Seascapes:** Shores are blanketed in virgin snow, and castles of ice are awash in orange and pink during the midnight sunset: November is a landscape photographer's dream.

**Wildlife Highlights:** It's mating season for gentoo, Adélie and chinstrap penguins, and colonies are a flurry of courtship activity, with some individuals already incubating eggs. Elephant seals have come ashore to birth their pups.

**Essential Experience:** When conditions are right, the captain can "park" the ship in the fast ice and disembark travellers for cross-country skiing, snowshoeing or hiking across the frozen sea.



*December: Exceptional undersea footage.*

## DECEMBER

**Landscapes & Seascapes:** The midnight sun returns, and the summer melt is in its earliest stages—icebergs are still massive, creating a seascape that resembles a natural sculpture garden.

**Wildlife Highlights:** Orcas and humpbacks abound, and penguin rookeries are bustling in preparation for the mid-month chick hatching. Clear waters allow undersea specialists to document an array of surprisingly colourful crustaceans, anemones and other creatures.

**Essential Experience:** Kayaking amid towering icebergs.



*Cross-country skiing, exclusively available in November.*



*November sunset.*



*January: Spot newborn penguin chicks.*

## JANUARY

**Landscapes & Seascapes:** The warmer weather triggers glaciers to calve thunderous chunks of ice into Antarctic seas.

**Wildlife Highlights:** Newborn penguins are chasing down their parents for food. Adventurous chicks also mean active predators, particularly the prehistoric-looking leopard seal. Leopard, crabeater and Weddell seals have birthed their doe-eyed pups, which can be spotted snoozing on ice floes or bobbing between bergy bits.

**Essential Experience:** Zodiac cruising under the shimmering light of summer's midnight sun.



*February: Whales are plentiful.*

## FEBRUARY

**Landscapes & Seascapes:** The pack ice has weakened, expanding the boundaries for exploration.

**Wildlife Highlights:** February is prime time for whales—minke, sperm, southern right and humpback whales are all abundant. Without the pressing need to hunt, these highly intelligent cetaceans can flex their curiosity—sometimes swimming right up to the boat.

**Essential Experience:** Watching penguin chicks fledge into icy waters.

# ANTARCTICA

## THE ULTIMATE FAMILY EXPEDITION

Antarctica brims with unique sights that light up the faces of young travellers and seasoned explorers alike. Colossal icebergs float past your cabin window, penguins skitter across snowy beaches and curious whales may even swim alongside your Zodiac. Imagine sharing these incredible experiences with the people you cherish most, on an unforgettable, family-friendly voyage to the ends of the Earth.



### EXPLORATION FOR EVERY GENERATION

Antarctic expeditions have something for everyone: the grade schooler fascinated by penguins and their playful antics, the teenager or college grad with a newfound interest in the climate sciences and the grandparent who wants to watch intricate ice sculptures drift past the ship's bow. Activities range from leisurely to invigorating so that every member of your group can make the most of their Antarctic experience.

### NURTURING YOUNG EXPLORERS

On most Antarctic voyages,\* kids and teens can participate in the National Geographic Global Explorers programme, which teaches travellers 18 and under to explore like scientists and tell the stories of Antarctica through photographs, videos, drawings and more. Throughout the journey, young adventurers are led by certified field educators—inspiring mentors who are experts at using Antarctica as a natural classroom.



\*The National Geographic Global Explorers programme is offered on the following voyages: *Voyage to Antarctica*; *Quest for the Antarctic Circle*; and all *Antarctica Direct* itineraries, which fly over the Drake Passage.



#### Learn More

Read **7 Amazing Activities for Kids Exploring Antarctica** to learn more about onboard programming for young explorers.

# MAKE HOLIDAY MEMORIES AT THE BOTTOM OF THE GLOBE

The holidays are a time for creating new memories with your family and friends, and there's no better way to make the season shine than by embarking on an incredible adventure together. Next year, start a new tradition with travel, and set your sights on Antarctica, the ultimate winter wonderland. Experience the magic of exploring the ends of the Earth with your loved ones, and share in the gift of an extraordinary journey that you'll cherish forever.



# ANTARCTICA, PATAGONIA AND THE SOUTH ATLANTIC ISLES

Venturing to the bottom of the globe is a chance to discover the world's last great wildernesses, where whales swim, penguins flock and albatrosses soar. Discover Antarctica, Patagonia or the wild isles of the South Atlantic on voyages informed by more than five decades of sailing these untamed waters.





Kayakers and an Adélie penguin.

# Antarctica Direct: Fly the Drake Passage



8, 9 and 10 DAYS | FROM £9,141pp  
 2025 Nov., Dec. | 2026 Jan., Feb., Nov., Dec. | 2027 Jan., Feb.  
**National Geographic Explorer, National Geographic Orion**

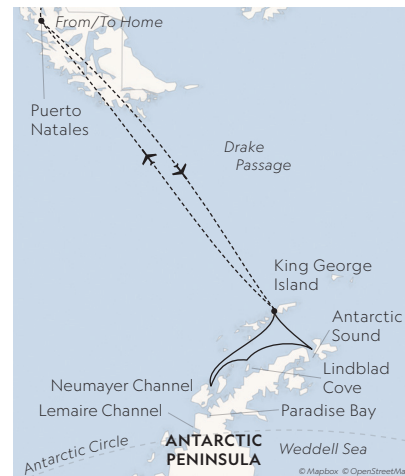
Visit [expeditions.co.uk/fly-the-drake-passage](https://expeditions.co.uk/fly-the-drake-passage) for itinerary details and current rates

## HIGHLIGHTS

- Get a head start on your Antarctica experience by flying from Puerto Natales across the Drake Passage to King George Island, landing at the Chilean research station that permanently operates there.
- Hike amid magnificent mountains, see huge glaciers, kayak in protected waters and observe a parade of gentoo, Adélie and chinstrap penguins.
- November departures offer the possibility to cross-country ski or snowshoe across the frozen sea ice, conditions permitting.
- With the National Geographic Global Explorers programme, kids and teens can learn about the seventh continent through immersive, hands-on activities.
- Extend the expedition to explore majestic Torres del Paine National Park—Patagonia’s crown jewel.

## Special Guest

Join National Geographic Photographer **Nick Cobbing** on Nov. 16, 22 and 28, 2025 on *Antarctica Direct: Fly the Drake Passage 9-Day* and on Dec. 4, 2025 on *Antarctica Direct: Fly the Drake Passage 8-Day*.



These are examples of expedition locations.

**Note:** Delays and early departures of flights due to inclement weather are common in Antarctica. In the event of a flight adjustment, your expedition team may implement a contingency plan with alternative activities.

# Antarctica Direct: Sail and Fly the Drake Passage



10 DAYS | FROM £9,700pp

2025 Nov., Dec. | 2026 Jan., Feb., Nov., Dec. | 2027 Jan., Feb.

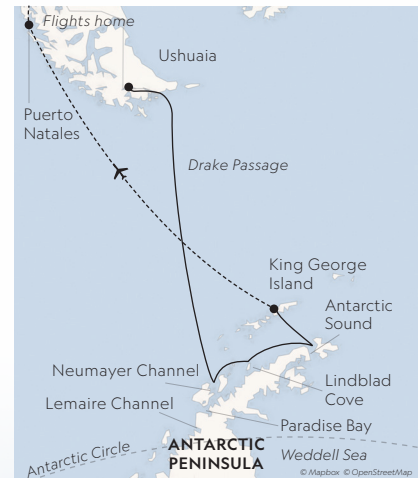
*National Geographic Explorer*

Visit [expeditions.co.uk/sail-fly](https://expeditions.co.uk/sail-fly) for itinerary details and current rates

## HIGHLIGHTS

- Experience it all—cruise the legendary Drake Passage aboard the *National Geographic Explorer* and then enjoy the ease of returning on a two-hour direct flight from King George Island to Puerto Natales.
- Explore the world's last great wilderness in the company of top naturalists and the most experienced polar captains in Antarctica, with over 55 years of expedition heritage.
- Hike amid magnificent mountains, see huge glaciers and observe a parade of gentoo, Adélie and chinstrap penguins.
- Kayak in protected waters, paddling in the Antarctic stillness as penguins swim nearby.
- November departures offer the possibility to cross-country ski or snowshoe across the frozen sea ice, conditions permitting.
- With the National Geographic Global Explorers programme, kids and teens can learn about the seventh continent through immersive, hands-on activities.

*Gentoo and Adélie penguins leaping off ice in Lindblad Cove.*



*These are examples of expedition locations.*

**Note:** Delays and early departures of flights due to inclement weather are common in Antarctica. In the event of a flight adjustment, your expedition team may implement a contingency plan with alternative activities.





An Antarctic iceberg towers over the National Geographic Endurance.

## Quest for the Antarctic Circle



16 DAYS | FROM £22,052pp

2027 Jan.

National Geographic Endurance

Visit [expeditions.co.uk/antarctic-circle](https://expeditions.co.uk/antarctic-circle) for itinerary details and current rates

### HIGHLIGHTS

- Experience a once-in-a-lifetime event, venturing ever south in pursuit of the Antarctic Circle (conditions permitting)—and then celebrate the crossing with a group toast.
- Sail aboard the state-of-the-art *National Geographic Endurance*, a top-tier ice-class vessel with safety technologies that far exceed industry requirements.
- Explore the last great wilderness in the company of a team of veteran naturalists, and take epic photographs with the help of a National Geographic photographer on board every departure.
- Watch whales off the bow, glide around enormous icebergs in Zodiacs, explore on shore and kayak near porpoising gentoo, Adelie and chinstrap penguins.
- Discover the unexpectedly dazzling marine realm with a dedicated undersea specialist.
- Extend the expedition to the magnificent Iguazú Falls, or explore historic Buenos Aires.



These are examples of expedition locations.



Guests exploring by Zodiac.

# Voyage to Antarctica



12 DAYS | FROM £10,369pp

2025 Nov., Dec. | 2026 Jan., Nov., Dec. | 2027 Jan., Feb.

**National Geographic Endurance, National Geographic Resolution**

Visit [expeditions.co.uk/antarctic](https://expeditions.co.uk/antarctic) for itinerary details, extensions and current rates

## HIGHLIGHTS

- Explore the last great wilderness with a team of top naturalists aboard a state-of-the-art polar ship.
- Photograph penguin colonies—gentoo, Adélie and chinstrap—with a National Geographic photographer.
- Watch whales off the bow. Glide around enormous icebergs in Zodiacs. Hike on shore, kayak—and even possibly cross-country ski in early November.
- Discover the unexpectedly dazzling world beneath the waves in footage shot by an undersea specialist.
- Extend your expedition and immerse yourself in the art and architecture of Buenos Aires or go on a culinary adventure in Santiago. Or, visit magnificent Iguazú Falls.

## Special Guests

Join National Geographic Photographers **Robert Hernandez** on Nov. 17, 2025, **Rich Reid** on Nov. 27 and Dec. 7, 2025 and **Chris Rainier** on Dec. 29, 2025. Join National Geographic Expert **William Saturno** on Jan. 28, 2026.



# Antarctica, South Georgia and the Falklands



22 DAYS | FROM £14,585pp  
2025 Oct., Nov. | 2026 Feb., Oct., Nov. | 2027 Feb.  
**National Geographic Explorer, National Geographic  
Endurance, National Geographic Resolution**

Visit [expeditions.co.uk/asgf](https://expeditions.co.uk/asgf) for itinerary details, extensions and current rates

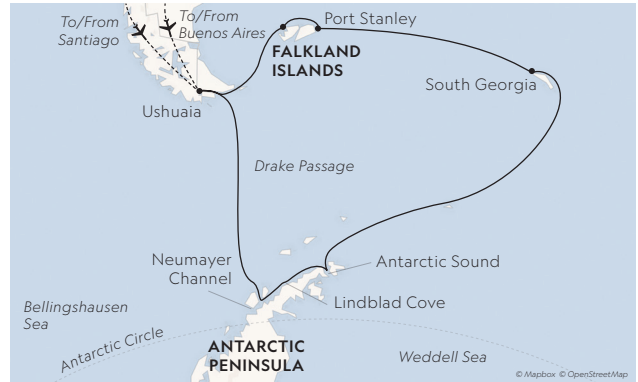
## HIGHLIGHTS

- This voyage has it all: the impossible beauty of Antarctic ice, the vast king penguin colonies of South Georgia and the Falklands' amazing albatross colonies.
- In South Georgia, be greeted by 100,000 king penguins. See the Falklands' impressive colonies of nesting rockhopper, Magellanic and gentoo penguins.
- Get your best shots ever with a National Geographic photographer at your side.
- Conditions permitting, early season departures offer the possibility to cross-country ski on the frozen sea ice.
- On all 2025 departures, enjoy an exclusive onboard screening of *ENDURANCE* from National Geographic Documentary Films, which tells the epic tale of Sir Ernest Shackleton's lost ship and the quest to find it.
- Extend your expedition, exploring historic Buenos Aires or Santiago's culinary scene. Or, visit the magnificent Iguazu Falls.

## Special Guests

Join National Geographic Photographers **Jasper Doest** on Oct. 18, 2025 and **Jeff Mauritzen** on Nov. 19, 2025. On Oct. 30, 2025, join **Mensun Bound**, marine archaeologist and director of exploration for the 2022 discovery expedition of Shackleton's *Endurance*.

*King penguin colony, South Georgia.*



These are examples of expedition locations.



# Patagonia, Falklands, South Georgia and Antarctica Odyssey



25 DAYS | FROM £34,180pp

2027 Jan.

National Geographic Resolution

Visit [expeditions.co.uk/antarctic-odyssey](https://expeditions.co.uk/antarctic-odyssey) for itinerary details and current rates

## HIGHLIGHTS

- Discover four iconic regions in the company of top naturalists, National Geographic photographers and the most experienced polar captains in Antarctica, with 55+ years of expedition heritage.
- Navigate Chile's coastal fjords and explore spectacular Glacier Alley, where monumental glaciers calve into the sea.
- Visit Stanley, the capital of the Falkland Islands and a charming outpost of British culture tucked into a small bay.
- Observe elephant seals, gentoo penguins and 100,000 pairs of king penguins on a single beach in South Georgia.
- Seek out Antarctica's iconic wildlife—including penguins, seals and orcas—and marvel at incandescent icebergs using the ship's fleet of kayaks and Zodiacs.
- Extend your expedition and get a taste for Santiago's famous valley wine region.



These are examples of expedition locations.

National Geographic Resolution  
in Chilean Patagonia.





Zodiac cruising on the Antarctic Peninsula.

# Antarctica and Patagonia: Legendary Ice and Epic Fjords



17 & 18 DAYS | FROM £13,273pp  
2025 Oct. | 2026 Jan., Feb. | 2027 Feb.

*National Geographic Explorer, National Geographic Resolution*

Visit [expeditions.co.uk/epicfjords](https://expeditions.co.uk/epicfjords) for itinerary details, extensions and current rates

## HIGHLIGHTS

- Experience the celebrated wonders of the Antarctic Peninsula, southern Patagonia and the Chilean fjords—all in a single, epic voyage.
- These are places of unimaginable beauty, where humpback whales breach and penguins gather, icebergs shimmer and sapphire-hued fjords harbor virgin forests.
- Seek out Antarctica’s iconic wildlife—including penguins, leopard seals and orcas.
- Navigate Chile’s coastal fjords and explore spectacular “Glacier Alley,” where monumental glaciers calve into the sea.
- Explore beneath the snowcapped “horns” of Torres del Paine National Park, discover private reserves such as Karukinka and cruise Chile’s newest marine park.
- Extend your expedition and get a taste for Santiago’s famous valley wine region or explore historic Buenos Aires.



## Special Guests

Join National Geographic Photographers **Macduff Everton** on Oct. 12, 2025, **David Doubilet & Jennifer Hayes** on Jan. 26, 2026 and **Chris Rainier** on Feb. 10, 2026.

New



Southern right whale.

# Wild Coasts of Argentina, South Georgia and the Falklands



25 DAYS | FROM £23,910pp  
2025 Oct.

**National Geographic Endurance**

Visit [expeditions.co.uk/wildcoasts](https://expeditions.co.uk/wildcoasts) for itinerary details, extensions and current rates

## HIGHLIGHTS

- Seek out the whale-rich waters of UNESCO World Heritage-listed Peninsula Valdés to observe southern right whales in their annual breeding grounds—one of the world’s great wildlife spectacles.
- Capture the windswept beauty of the Falklands—and the black-browed albatrosses and penguins that thrive here—with guidance from a National Geographic photographer.
- Trace the spellbinding story of Shackleton’s fateful expedition on South Georgia and witness tens of thousands of stately king penguins.
- Discover the burgeoning wine region of Bahía Bustamante, and visit Patagonia Austral National Park and Blue Patagonia UNESCO Biosphere Reserve.
- Extend the expedition to the magnificent Iguazú Falls or explore historic Buenos Aires.

## Special Guests

Join National Geographic Photographer **Martin Gregus** and Expedition Leader and Naturalist **Bud Lehnhausen** on Oct. 7, 2025.



## Special Offer


Book select 2025 departures and receive 20% off your cabin fare. See pg. 30 for details.

## EXPLORE MORE AT THE BOTTOM OF THE GLOBE

Many Antarctic itineraries offer pre- or post-voyage extensions in and around their port cities. Join local experts on one of these curated, land-based experiences, each designed to immerse you more deeply in your travel region’s rich history, culture and nature.




### Torres del Paine: Exploring Patagonia’s Crown Jewel PRE-VOYAGE | 5 DAYS | FROM £5,183

 Discover the gem-like lakes, soaring peaks and wild rivers of Torres del Paine National Park—one of the world’s most iconic nature reserves—as you explore on a variety of walks, hikes, horseback rides and more. Visit [expeditions.co.uk/tdp-ext](https://expeditions.co.uk/tdp-ext) to learn more.




### Buenos Aires: History, Tango and Urban Nature PRE-VOYAGE | 3 DAYS | FROM £2,939

 In “the Paris of South America,” see famous architecture and vibrant neighborhoods, visit top museums and take in a tango performance on an extension highlighting the very best that Buenos Aires has to offer. Visit [expeditions.co.uk/buenos-airesext](https://expeditions.co.uk/buenos-airesext) to learn more.




### Iguazú Falls: Wild Water and Wildlife POST-VOYAGE | 4 DAYS | FROM £3,321

 Iguazú Falls thunders over 250 feet into a river canyon—an incredible display of power. Get close to the cascades on catwalks and stay at the only hotel in Iguazú National Park, a rainforest teeming with life. Visit [expeditions.co.uk/iguazuext](https://expeditions.co.uk/iguazuext) to learn more.



### Santiago: Wine and Culinary Highlights PRE-VOYAGE | 3 DAYS | FROM £3,015

 Sample Santiago’s acclaimed cuisine at choice restaurants, and venture into wine country to tour beautiful vineyards, meet Chilean winemakers and sample world-class vintages alongside the experts who created them. Visit [expeditions.co.uk/santiagoext](https://expeditions.co.uk/santiagoext) to learn more.

Note: All pricing is per person double occupancy. On all extensions, airfare is not included and must be booked through Lindblad Expeditions. Available on select departures. For details, visit [expeditions.co.uk](https://expeditions.co.uk).

## PRIVATE CHARTER

Charter with National Geographic-Lindblad Expeditions and sail to the heart of the world's most remote and wild places—with your favourite travel companions. Host your next board meeting or staff incentive trip aboard the fleet, or gather your friends and family for a special celebration in a spectacular destination. When you charter an intimate expedition ship exclusively for your group, the team will customise every detail of your experience to ensure your time on board is unforgettable. Discover the wild world on your private voyage with National Geographic-Lindblad Expeditions and cherish the memories forever. Book your private charter today.

**Karen Kuttner-Dimitry**, Vice President of Affinity & Charter Sales, karenk@expeditions.co.uk

## SPECIAL OFFERS

Offers are valid for new bookings only, subject to availability and may not be combined with other offers unless otherwise noted. Call for details.

**Celebrate Life's Milestones:** Celebrate a milestone with a group of eight or more and enjoy a special amenity package including: 5% savings on voyage fares, custom group photo, US\$150 shipboard credit for the group, and other special gifts. Milestone celebration to be communicated at time of booking. Valid for new bookings only on select departures, subject to availability, not applicable on airfare or extensions, and may not be combined with other offers. Deposit, final payments, and cancellation policies for group travel vary from our regular policies. Call for details.

**10% Off Back-to-Back Voyages:** Save 10% on consecutive departures, applicable on voyage fares only and not valid on extensions or airfare. Valid for new bookings only, subject to availability, and may not be combined with other offers. Call for details.

## INCLUSIVE PRICING

- Excursions, hotels and airport transfers as indicated in the itinerary
- All meals as indicated in the itinerary, both aboard and on shore. Meals are inspired by regional cuisine and locally sourced where possible
- Hors d'oeuvres inspired by regional cuisine and locally sourced where possible
- 24-hour access to snacks, premium coffees and teas, non-alcoholic beverages and filtered water
- Selection of exploration tools curated to your destination, such as Zodiacs, kayaks and other state-of-the-art gear
- Presentations on your destination by expedition staff and expert guest speakers
- Guidance and company of leading expedition staff
- The services of a medical professional



**Save 5% Travelling As A Group:** Save 5% when travelling as a group of eight or more people. Valid on voyage fares only and not applicable on extensions or airfare. Deposit, final payments, and cancellation policies for group travel vary from our regular policies. Valid for new bookings only, subject to availability, and may not be combined with other offers. Call for details.

**Bringing the Kids:** We believe sharing an expedition with children is a life-enhancing experience. Take £500 off for each child under the age of 18 on any departure. Not applicable on extensions or airfare. Call for details.

- Morning stretch classes and 24-hour access to exercise equipment where available
- 24-hour access to lounges, observation decks, library stocked with regionally relevant literature and other shared spaces
- Complimentary National Geographic-Lindblad Expeditions parka on select Antarctic voyages
- Complimentary reusable water bottle to fill at onboard water refill stations
- Park and site entrance fees, special access permits and port taxes

**Beer, Wine, Cocktails and Spirits:** Your bar tab is included on all departures aboard *National Geographic Endurance*, *National Geographic Resolution*, *National Geographic Orion* and *National Geographic Explorer*. Premium brands available for purchase.

**Crew Gratuities:** Crew tips are included on all departures aboard *National Geographic Endurance*, *National Geographic Resolution*, *National Geographic Orion* and *National Geographic Explorer*.

## RESERVATION INFORMATION

**Terms & Conditions:** For complete terms and conditions please visit [expeditions.co.uk/terms](https://expeditions.co.uk/terms)

**Pricing:** For best pricing book early. Prices quoted in this brochure are per person based on double occupancy in GBP and based on select departures. Prices quoted are valid at the time of printing, February 27, 2025, are subject to change and availability at time of booking and are not guaranteed until required deposit is made. Visit [expeditions.co.uk](https://expeditions.co.uk) or call for all pricing.

**Pricing Includes:** All accommodations aboard ship or in hotels per itinerary; all meals as indicated in the itinerary, both aboard and onshore; beer, wine, cocktails, and spirits (premium brands available for purchase) aboard; excursions and airport transfers to and from charter flights, and for recommended flights arriving and departing within recommended window, as indicated in the itinerary; exploration tools such as Zodiacs, kayaks, cross-country skis, and snowshoes (where applicable); guidance and company of leading expedition staff; presentations by expedition staff and expert guest speakers; complimentary reusable water bottle; crew gratuities; onboard physician consultations (where available); 24-hour access to exercise equipment (where applicable); 24-hour access to lounges, observation decks, library, and other shared spaces; basic Wi-Fi (where applicable); park and site entrance fees, special access permits, and port taxes. Unused services or items included in our programmes are non-refundable.

Pricing and promotions may vary for reservations booked through affinity or charter organizations. Check your affinity or charter organization for complete pricing and promotional information.

\*Basic Wi-Fi plan aboard the National Geographic-Lindblad Expeditions fleet, with services provided by Starlink.

**Not Included:** Airfare (except flights when indicated as included and/or as required); charter airfare (where applicable, except when indicated as included and/or as required); pre- and post-expedition extensions (except flights when indicated as included); additional hotel nights (except when indicated as included); premium cocktails and spirits (except when indicated as included); private transfers (except when indicated as included); additional costs associated with medical services outside onboard physician consultation (where applicable); enhanced and premium Wi-Fi plans aboard expedition fleet; laundry, spa treatments, and phone services; travel protection plans; and passport, visa, and immigration fees. For select voyages, completing a medical evaluation form with VIKAND is required. If you utilize your physician, VIKAND's processing fee for your documentation will be added to your National Geographic-Lindblad Expeditions invoice. If you utilize VIKAND's physicians, an additional charge will be due and payable directly to VIKAND.

**Itinerary Modifications:** Itinerary routing may vary and stops may be subject to modification and/or permitting. Visit website itinerary pages for details and exceptions.

**Airfare:** For all programmes, airfare is an additional cost unless otherwise indicated as included. National Geographic-Lindblad Expeditions will gladly assist in making your air arrangements for a £50 per person service fee.

**Reservations, Deposits, and Final Payments:** To reserve your place, an advance payment for the programme is required at the time of reservation. Receipt of your initial payment indicates your acceptance of the terms and conditions. Final payment schedule can be found online. Visit [expeditions.co.uk/terms](https://expeditions.co.uk/terms) for complete details about deposits and final payment schedules which may vary by ship.

**Travel Protection Plan:** It is strongly recommended that you take advantage of the Travel Protection Plan. This plan offers comprehensive coverage to protect you from cancellation fees, costs incurred due to trip delays/interruption, damaged or lost baggage, medical assistance and evacuation during your travels. The Travel Protection Plan is available for U.S. residents only and may be purchased any time prior to final payment due date. If you are not satisfied for any reason, you may return your plan document to your travel supplier within 10 days after receipt. Your plan payment will be refunded, provided you have not already departed on the trip or filed a claim. When so returned, the coverage under the plan is void from the beginning.

**Responsibility and Other Terms & Conditions:** Certain provisions concerning, among other things, limitations of Lindblad Expeditions' and National Geographic Expeditions' (a division of National Geographic Partners, LLC) liability for loss of property, injury, illness, or death during the voyage will be provided to all guests on the ship's ticket sent prior to departure, and are also available on the website at [expeditions.co.uk/terms](https://expeditions.co.uk/terms), or upon request. By registering for a trip, the guest agrees to all such terms and conditions.

**Cancellation Policy:** Call for details or visit [expeditions.co.uk/cancellation-policy](https://expeditions.co.uk/cancellation-policy). Lindblad Expeditions, LLC is a registered member of the CA Seller of Travel Programme #2151120. Registration as a seller of travel does not constitute approval by the State of California. WA Seller of Travel Programme #601134845 001 0001.

©2024 Lindblad Expeditions. All Rights Reserved. Lindblad Expeditions and the Eye are the trademarks of Lindblad Expeditions, LLC.

©2024 NATIONAL GEOGRAPHIC EXPEDITIONS and the Yellow Border Design are trademarks of the National Geographic Society, used under licence.

Photo credits: Johan Bernekorn, Adam Cropp, Alexandra Daley-Clark, Douglas Gould, Eric Guth, Ovind Haug, Justin Hofman, Ralph Lee Hopkins, iStock, Nathan Kelley, Sven-Olof Lindblad, Jeff Litton, Sean Neilson, Kim Nesbitt, Michael S. Nolan, Paul North, Andrew Peacock, Douglas Scaletta, Shutterstock, David Vargas, Joshua Vela Fonseca.

## LOG ON TO EXPEDITIONS.CO.UK

Find everything you need to dream, research, or plan travel to 60+ destinations worldwide.

- Subscribe to the far-ranging weekly newsletter
- See [expeditions.co.uk/stories](https://expeditions.co.uk/stories) for articles, videos & Daily Expedition Reports
- Follow social media accounts for great posts @lindbladexp on Instagram, Pinterest, and @lindbladexpeditions on Facebook
- Subscribe to videos on [youtube.com/lindbladexpeditions](https://youtube.com/lindbladexpeditions)



### For Reservations: Contact your travel advisor or call +44.208.159.9339

Reservation Hours: Monday – Friday 9am – 5pm  
Saturday 9am – 5pm | Sunday CLOSED

National Geographic-Lindblad Expeditions

Fred. Olsen House, 42 White House Road, Ipswich, Suffolk, IP1 5LL

For additional information and online reservations, visit [expeditions.co.uk](https://expeditions.co.uk)



# EXPEDITIONS

National Geographic-Lindblad Expeditions  
Fred. Olsen House, 42 White House Road, Ipswich, Suffolk, IP1 5LL



+44.208.159.9339 | [WWW.EXPEDITIONS.CO.UK](http://WWW.EXPEDITIONS.CO.UK)

©2024. Travel + Leisure® is a registered trademark of Travel + Leisure Holdco, LLC, a subsidiary of Wyndham Destinations, Inc. Travel + Leisure® World's Best Awards is used under licence. Travel + Leisure® is published by TI Inc. Affluent Media Group, a Dotdash Meredith company, which is not affiliated with Wyndham Destinations, Inc. or its subsidiaries.

Pioneering Responsible Exploration: From our consistent quest to improve our practices to offsetting 100% of our carbon emissions, supporting conservation, science, and education initiatives around the planet, and investing in the communities in the places we explore, we are guided by our commitment to explore responsibly.

ANT-0325

## EMBARK ON THE VOYAGE OF A LIFETIME IN 2025

- Enjoy 20% off select Antarctic departures.
- Explore three new Antarctic itineraries, plus a new extension to Torres del Paine National Park.

See pg. 30 for offer details.



Visit [expeditions.co.uk/antarctica-special-offers](http://expeditions.co.uk/antarctica-special-offers) for details.